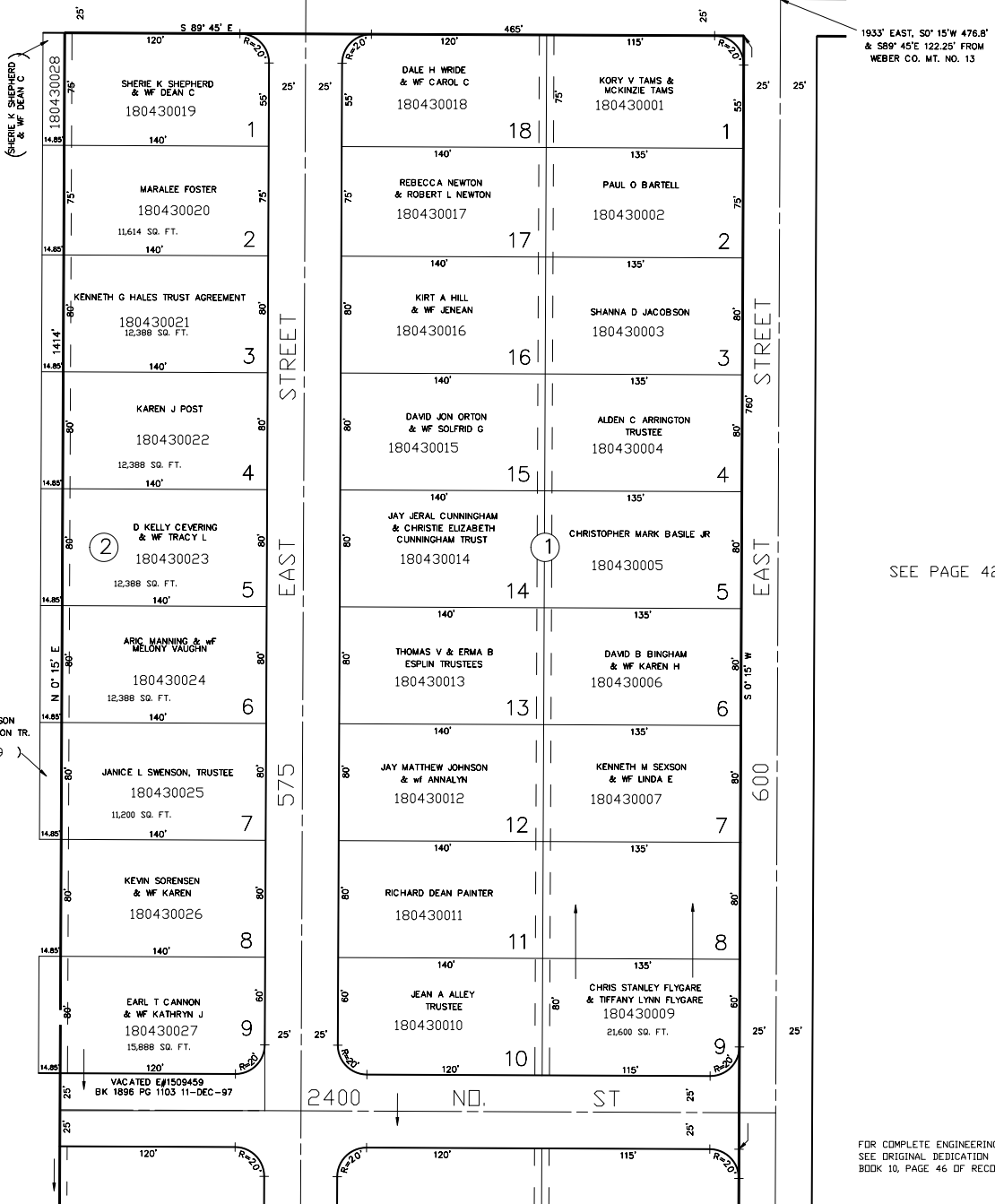


TAXING UNIT: 10

PART OF THE N.W. 1/4 OF SECTION 33, T.7N., R.1W., S.L.B. & M.
SIMMONS SUBDIVISION BLOCKS 1 & 2
 IN NORTH OGDEN CITY
 SCALE 1" = 60'

SEE PAGE 42

2550 NORTH STREET



SEE PAGE 42

SEE PAGE 42

DJANE D SWENSON
 & JANICE L SWENSON TR.
 (180430029)
 1188 SQ. FT.

1933' EAST, S0° 15' W 476.8'
 & S89° 45' E 122.25' FROM
 WEBER CO. MT. NO. 13

SEE PAGE 44

FOR COMPLETE ENGINEERING DATA
 SEE ORIGINAL DEDICATION PLAT IN
 BOOK 10, PAGE 46 OF RECORDS.